


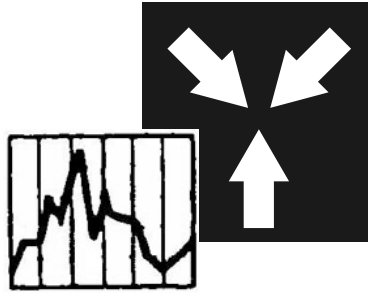
How have *trends* in
agriculture *changed*
over time?



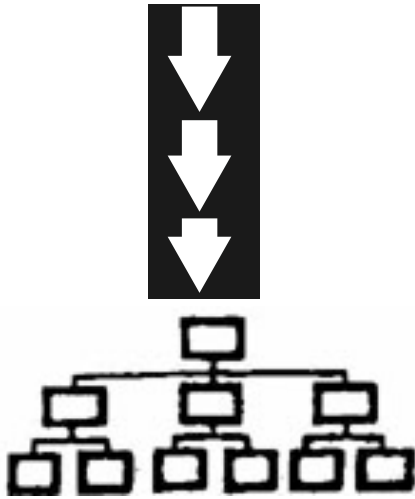
What *parallels*  you see between robotic labor in agriculture and the replacement of human labor in other industries?



What *forces/trends*
(economic, social,
political, etc) have
converged to facilitate
the use of robots/
mechanization in
agriculture?

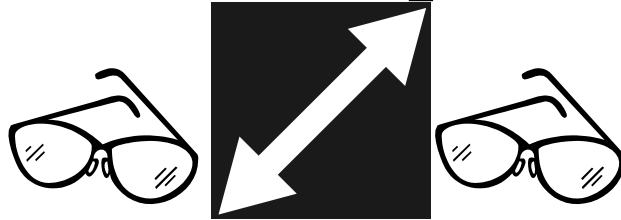


How might the use of robotic labor impact or ***contribute*** to the ***rules or structure*** already in place in agriculture?



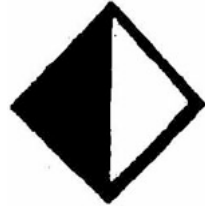
Considering the *varied perspectives*, how might mechanized farming and

robotic labor be
considered a *paradox*?




What are the *ethical issues* that might arise

surrounding the use of
robotic labor?



What are the potential
social, economic, and/or
political




consequences of
using robotic labor in
agriculture? 

What factors might



influence the
decision to replace
human labor with
robotic labor?

What  *value* might
people with differing
perspectives place on
robotic labor?

